



Adverb

Adverbs **describe** a verb, adjective, another adverb or a whole sentence and usually end in '**ly**'.

Examples:

She laughed **loudly**.

We are always told to eat **healthily**.





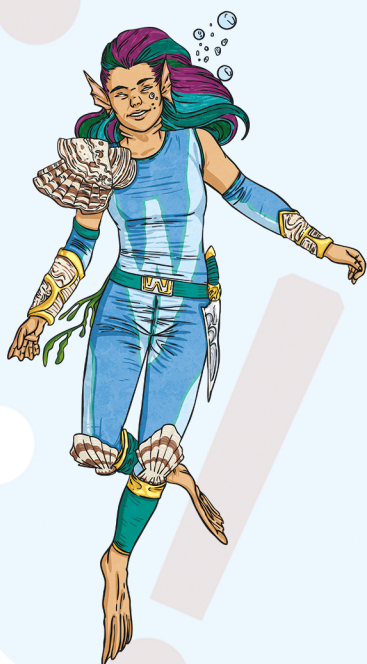
Verb

Verbs can be action words, e.g. dancing, to think or said. They can also show a state of being, e.g. is, am, was or were. Every sentence needs to include a verb."

Examples:

She **ran** to school.

They **had** a really good time
talking to each other.





Adjective

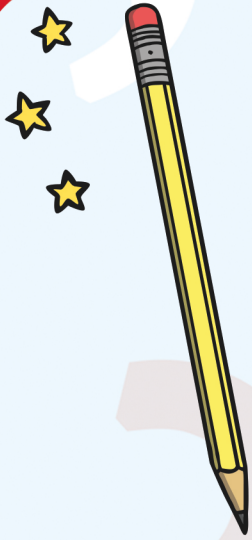
Adjectives **describe** a noun.

Examples:

The cheese was rather **smelly**!

The pancakes were **hot** and **delicious**.





Conjunction

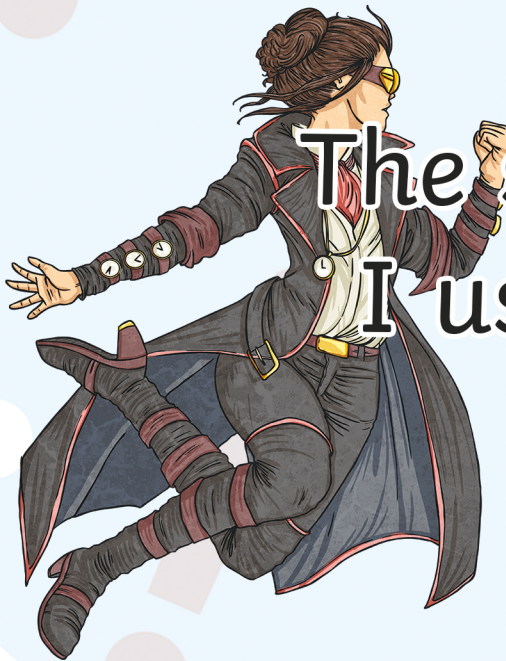
Conjunctions **join** sentences or clauses.

Examples:

The sweets were sour **but** tasty.

I used my banknote **because**

I had no change.





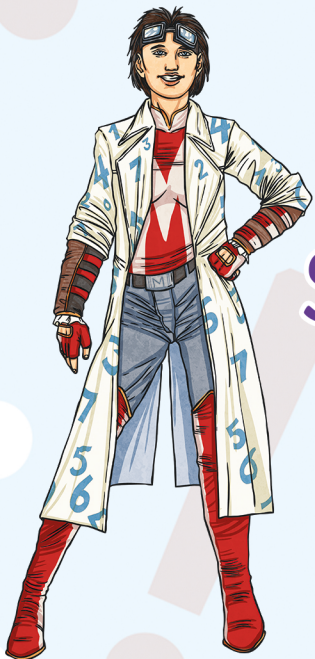
Pronoun

Pronouns take the place
of a **noun**.

Examples:

I bought a pet tortoise.

She played football every week.





Proper Noun

Proper nouns are the **names** of specific **people, things and places**. They always start with **a capital letter**.

Examples:

I am going to **Germany** with **Alice** on **Friday**.





Noun

Nouns are people, places, things or animals.

Examples:

My teacher wears a tie in school every day.





Determiner

Determiners tell you whether something is known or unknown.

Example:

I put **the** spoon down on **a** table.

That team has **some** big players.





Prefixes and Suffixes

Prefixes and suffixes are letters added to words to **change the meaning of them.**

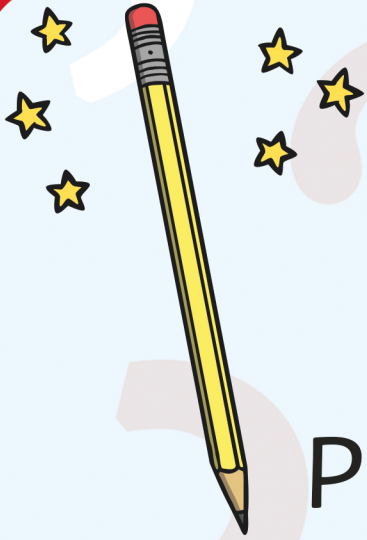


Examples:

uncomfortable = un + comfortable

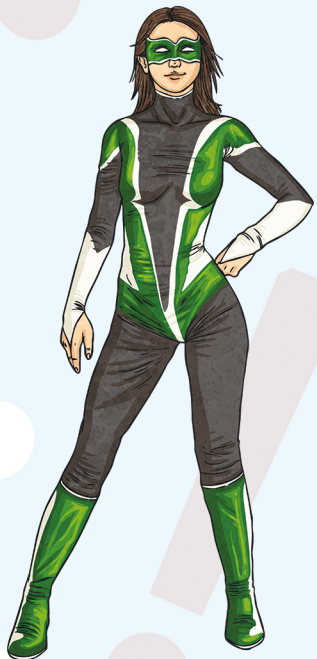
joyful = joy + full





Preposition

Prepositions are **where** or **when** something is in relation to something else.
Usually followed by a **noun**.



Examples:

He looks **inside** the box that
was **beside** the door.

